

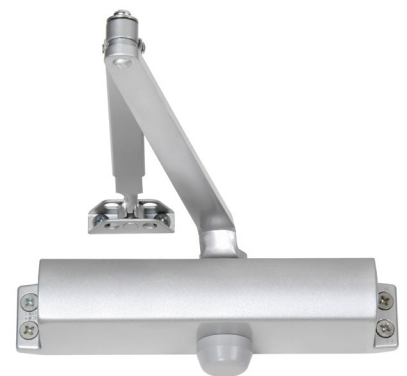


ALUMINUM STOREFRONT DOOR CLOSERS

Aluminum storefront openings continue to grow in popularity throughout a multitude of commercial buildings. With many closer options on the market today, it is important to understand the value and differences between Norton's 1600 and 160 Series door closers.



1600 SERIES



160 SERIES

Norton[®]

ASSA ABLOY

ASSA ABLOY, the global leader
in door opening solutions

www.NortonDoorControls.com

FEATURES & BENEFITS

FEATURE	BENEFIT	1600 SERIES	160 SERIES
---------	---------	-------------	------------

Listings and Approvals

ANSI A156.4 Grade 1	Meets or exceeds ANSI standards.	Yes	Yes
UL listed	Listed for use on fire-rated doors.	Yes	Yes
Extended Cycle Testing beyond ANSI Grade 1	Confirms durability and longer service life. ANSI requires 1.5m cycles.	25 Million	1.5 Million

Product Design

High performance casting alloys	Specially selected alloys provide increased strength, reduce wear and are dimensionally stable for a range of climatic conditions.	304 Alloy	Standard Alloy
Steel pistons	Specially selected to increase strength, reduce wear and extend service life.	Carbon Steel	Mild Steel
Pinion to arm attachment	Critical to maintain reliability under abusive conditions.	Precision Machined	Standard
Rack and pinion design	High strength design with increased rack and pinion engagement. Smooth load transfer increases reliability and service life.	13 Teeth	12 Teeth
Special applications support	Products customized for 'out of ordinary' applications.	Yes	No
Limited warranty period	Quality Norton door closers.	25 year	5 year

Product Configuration

Size and Multi-Sized springs	Provide maximum flexibility to meet site conditions.	Size 3 and 4 and Multi-Size 1-6	Size 4 and Multi-Sized 1-4
Regular, hold open, heavy duty and special application arms	Full range to meet typical North American architectural functions and mounting conditions.	Full range	Limited and series specific
Finish options (sprayed, powder coat, plated)	Range of choices to complement building décor.	Yes	689, 690 only
Optional full cover	May be required for specific applications	Yes	Yes
Adapter plates, mounting plates and brackets	Maybe required to meet site specific conditions.	Full range	Limited

Cross Reference Guide

Norton	LCN	Dorma	PDQ	Cal Royal	Stanley	Falcon	Hager
1600	1260	7400	–	–	QDC300	–	–
160	1250	7300	3100	300	D1610	SC60	5300

NOTE: No products are exactly alike. This cross reference represents our judgment of products that are most similar. Information has been obtained from trade sources. It is not represented nor guaranteed that any product exactly equals any other products.

Norton®

ASSA ABLOY

ASSA ABLOY is the global leader in door opening solutions, dedicated to satisfying end-user needs for security, safety and convenience

Since 1880, Norton door controls have been an integral part of schools, hospitals and businesses around the globe. When you need products and people that perform at the highest level, rely on Norton – From Open to Close.

Norton Door Controls | www.nortondoорcontrols.com
3000 Highway 74 East | Monroe, NC 28112 | Tel: 1-877-974-2255 | Fax: 1-800-338-0965

ASSA ABLOY Door Security Solutions Canada | www.assaabloy.ca
160 Four Valley Drive | Vaughan, Ontario, L4K 4T9 Canada | Tel: 800-461-3007 | Fax: 1-905-738-2478

Norton is a brand associated with Yale Security Inc., an ASSA ABLOY Group company. Copyright © 2012-2017, Yale Security Inc. All rights reserved. Reproduction in whole or in part without the express written permission of Yale Security Inc. is prohibited.